





**CAT**  
Rental Power

**CAT**  
Rental Power

**CAT**

500V

危险

065-7388



# CATERPILLAR®

## GENERATOR SET

---

ENGINE MODEL 3512

YEAR 2004

1250 KVA

1000 KW

.8 COS Ø

50 HERTZ

PRIME

X STANDBY

CONTINUOUS

---

## GENERATOR DATA

---

### GENERATOR DATA DESCRIPTION

3 PHASE ~

12 WIRE

X WYE

DELTA

X SERIES

PARALLEL

GENERATOR

400

VOLTS

1804

AMPS

EXCITATION

46

VOLTS

8.5

AMPS

695

FRAME

1500

REV/MIN

MAXIMUM TEMPERATURE RISE 130 ° C BY RESISTANCE

40 ° C AMBIENT

1000 METERS-ALTITUDE

CLASS H INSULATION

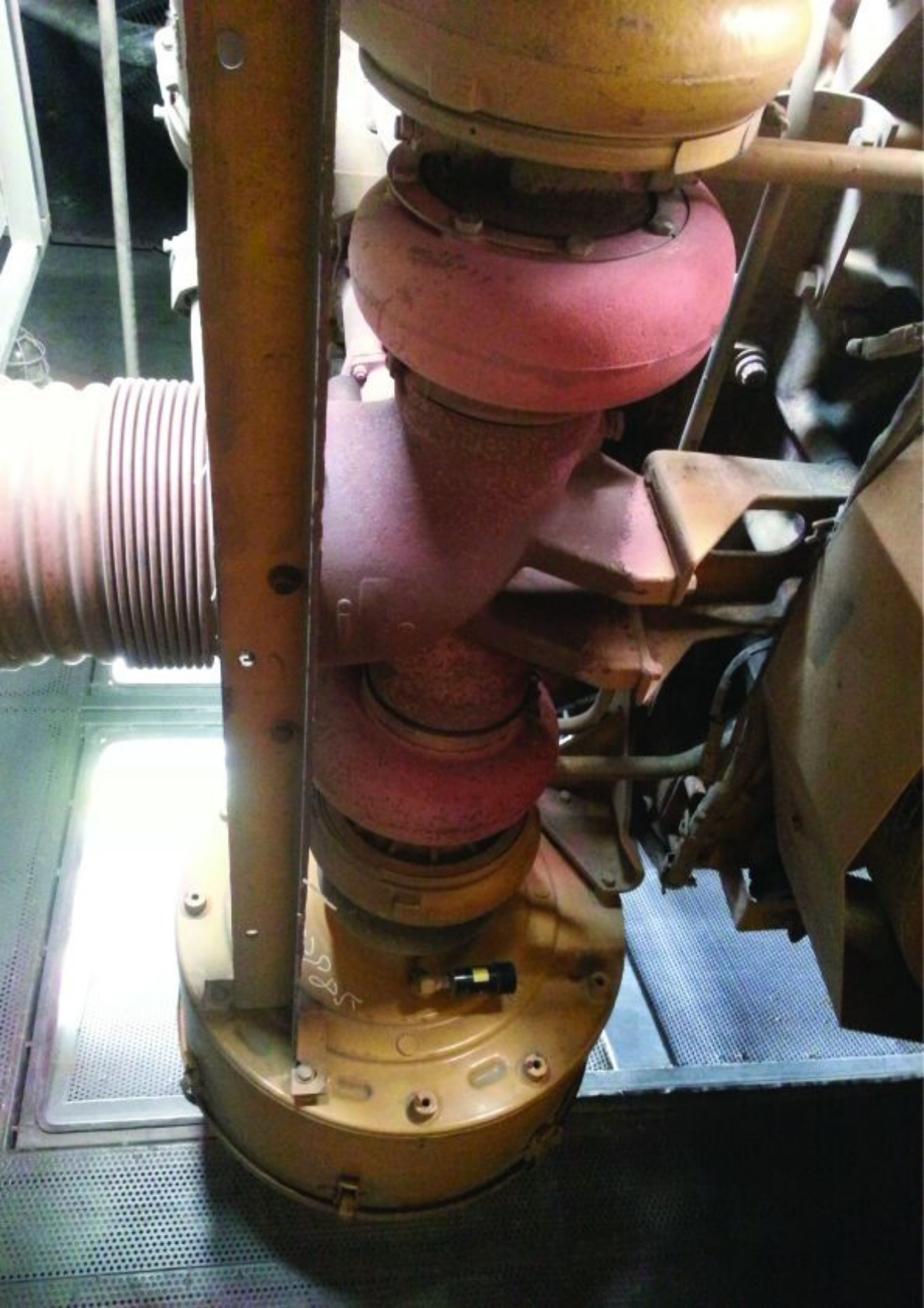
ENCLOSURE TYPE

---

INCLUDE SERIAL NUMBER AND GENERATOR PART NUMBER FOR GENERATOR  
SERIAL NUMBER PLATE WHEN ORDERING PARTS AND IN CORRESPONDENCE

GEN SET 25ND2275

ECO PLANING





# CAT<sup>®</sup>

**WARNING**  
[Illegible text]

**WARNING**  
[Lightning bolt symbol]

**WARNING**  
[Power button symbol] AUT [Tractor symbol]

**WARNING**  
[No smoking symbol] [Laptop symbol]

**WARNING**  
**HIGH VOLTAGE**  
POWER SOURCE MUST BE  
DISCONNECTED BEFORE  
WORKING ON EQUIPMENT.  
FAILURE TO DISCONNECT POWER  
SOURCE COULD RESULT IN  
INJURY OR DEATH.



**CATERPILLAR**



六缸发电机组



开机前请打开顶部排烟口!





Fleetguard  
INDUSTRIAL PRO  
FH23435  
Fleetguard is a Tenneco Company

Fleetguard  
INDUSTRIAL PRO  
FH23435  
Fleetguard is a Tenneco Company